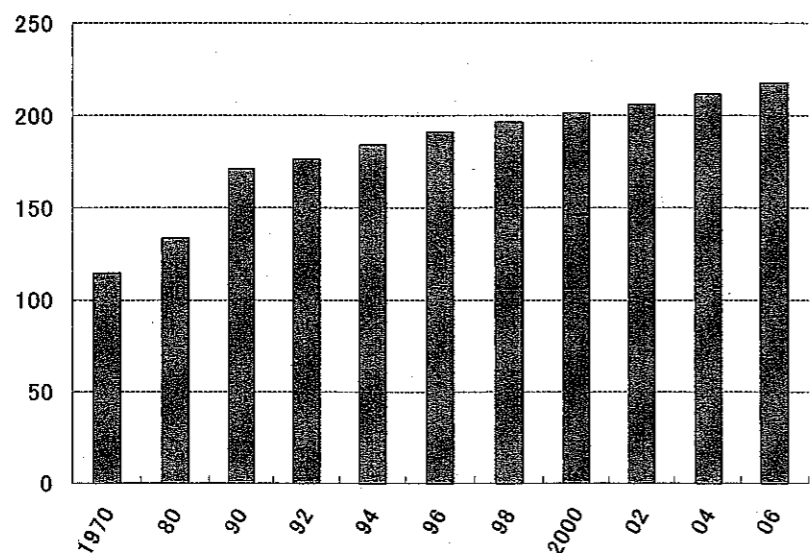
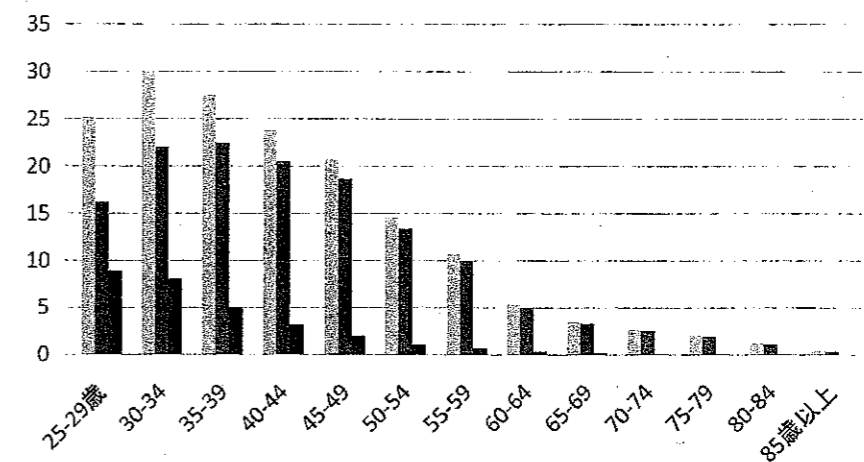


人口10万対医師数の推移

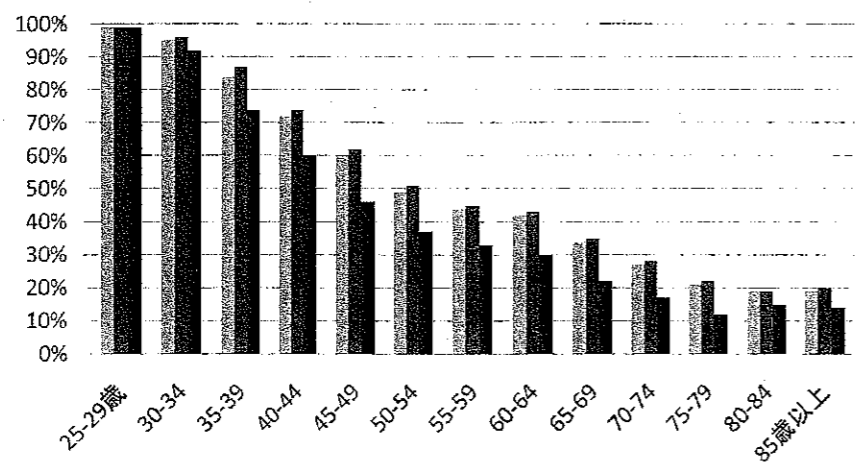


病院勤務医師の年齢分布(千人)



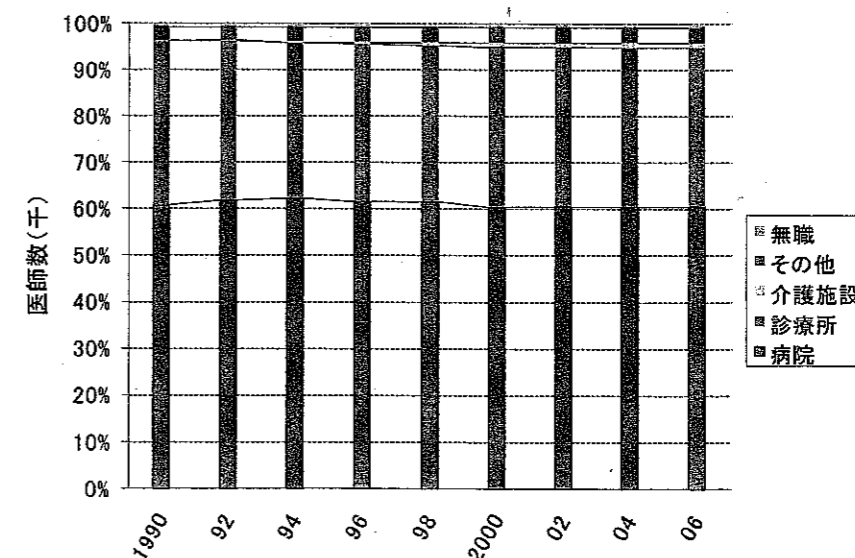
(平成18年医師・歯科医師・薬剤師調査)

年齢階層別病院勤務医比率



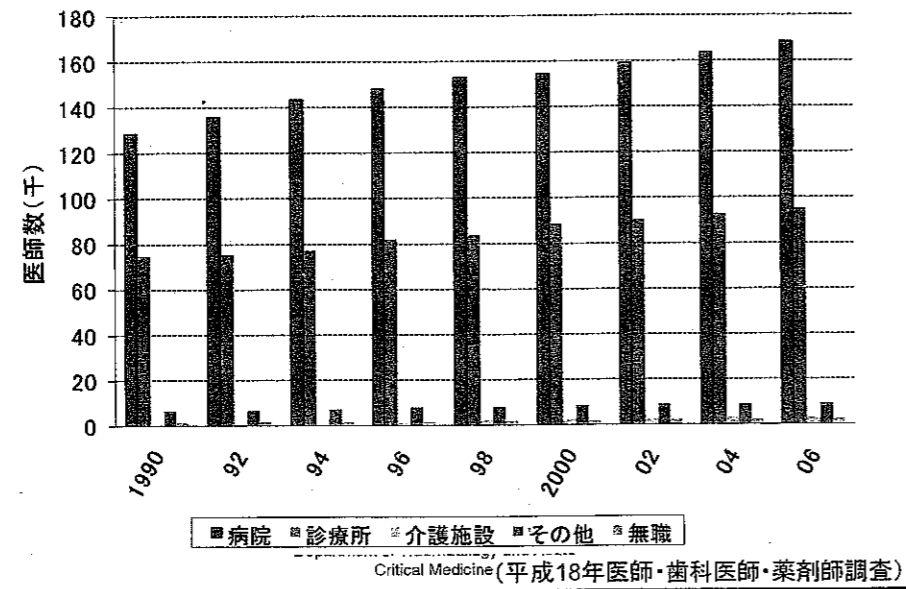
(平成18年医師・歯科医師・薬剤師調査)

業務種別医師数割合の推移

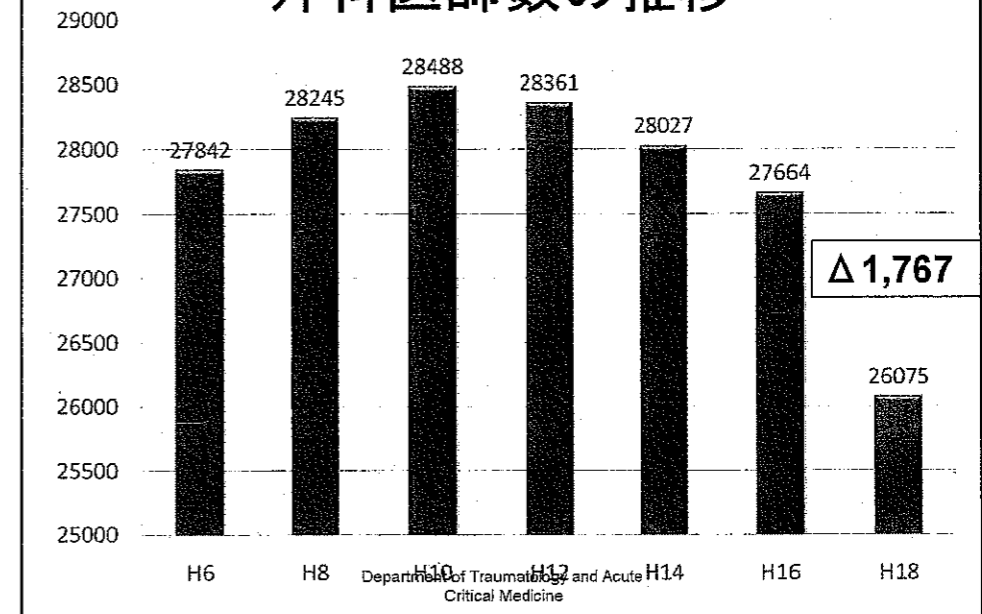


(平成18年医師・歯科医師・薬剤師調査)

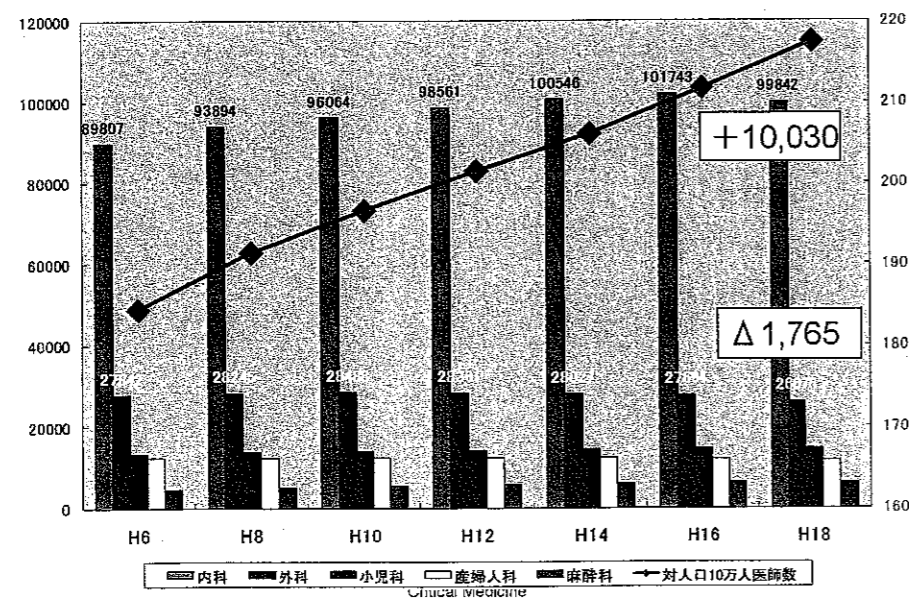
業務種別医師数の推移



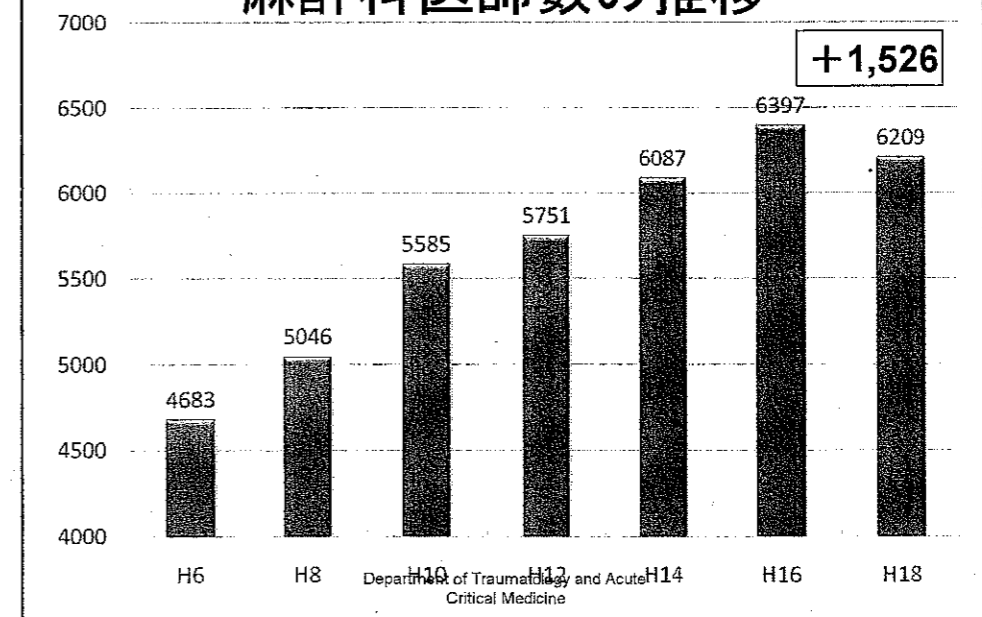
外科医師数の推移

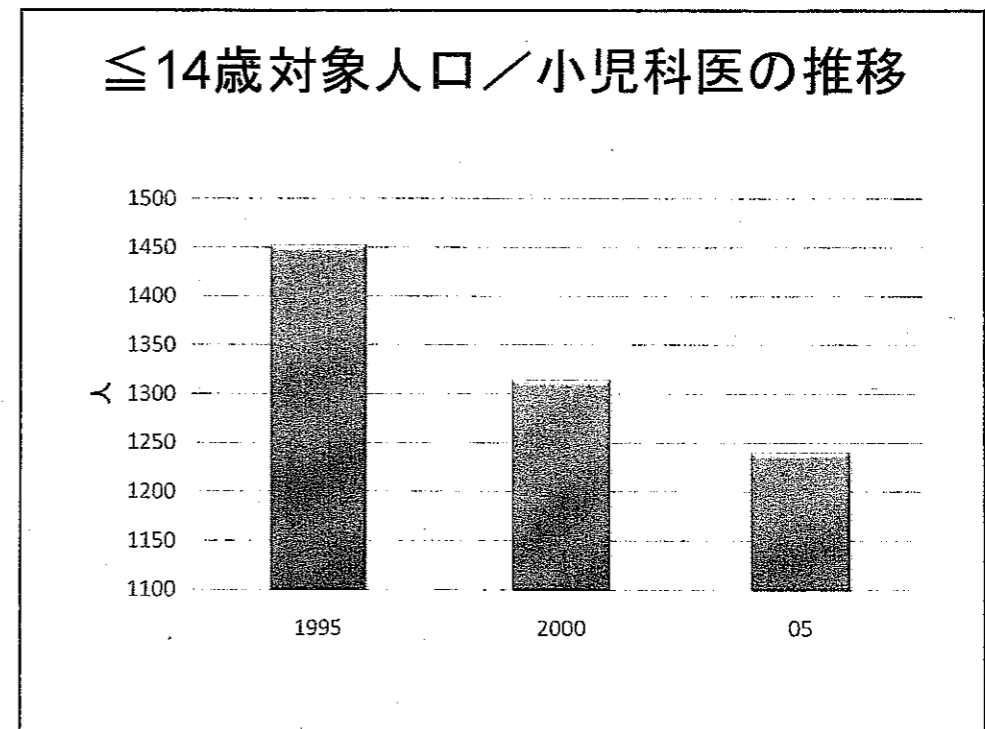
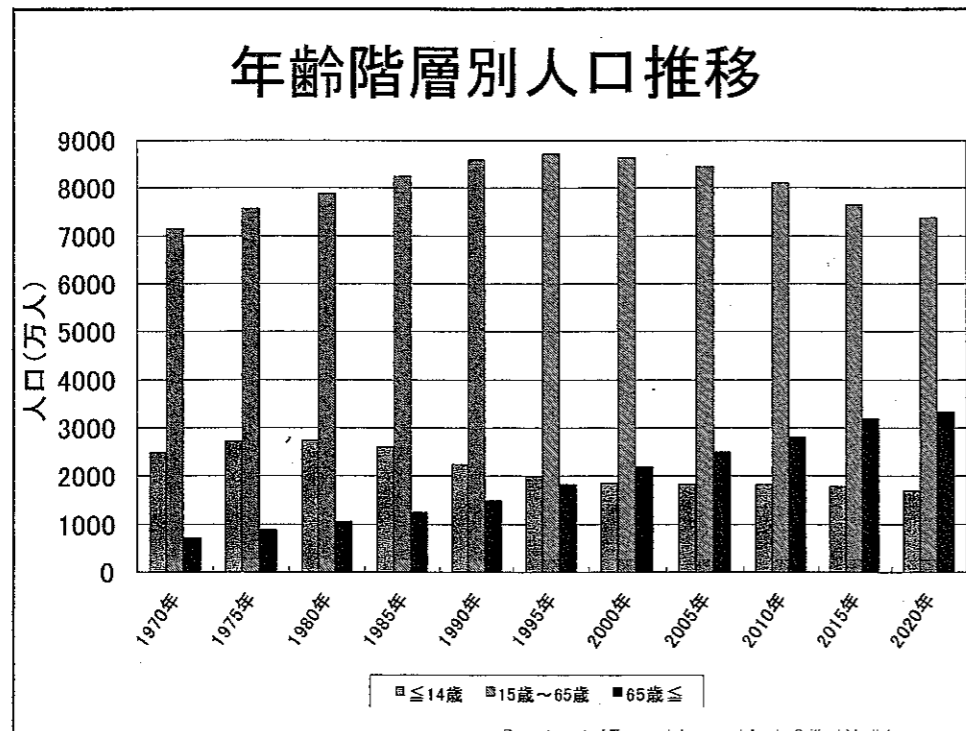
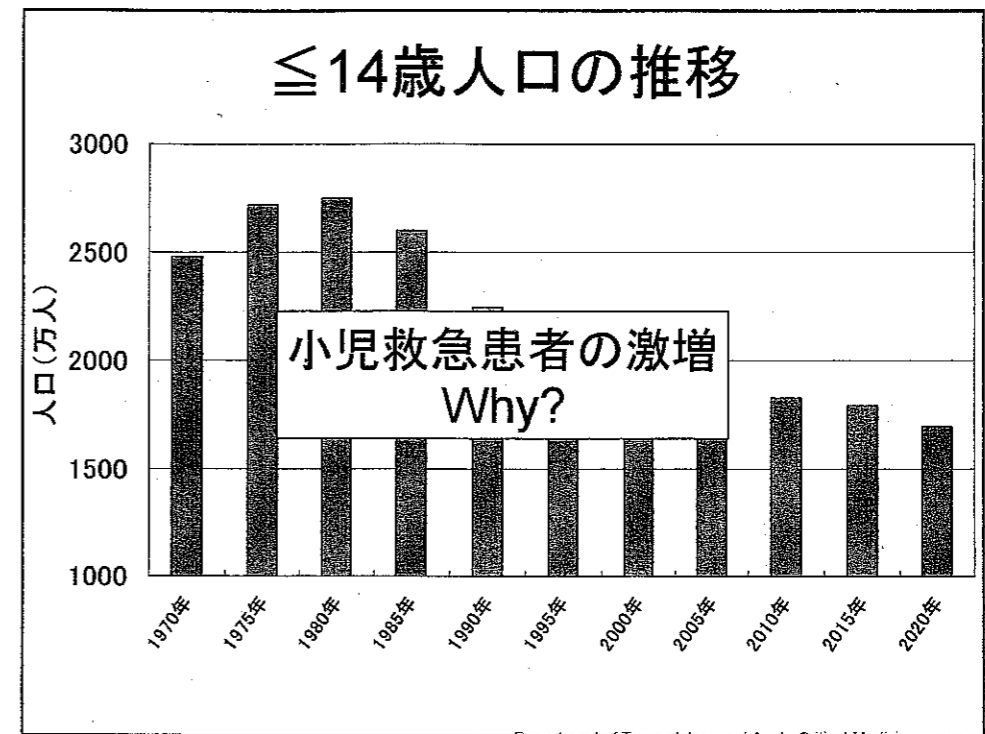
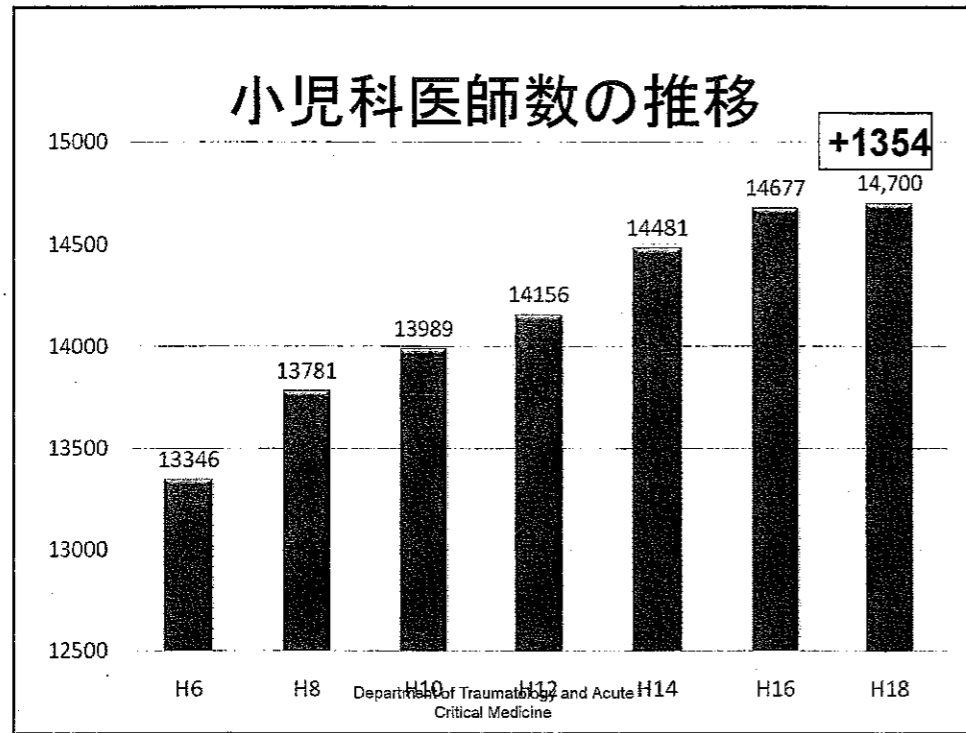


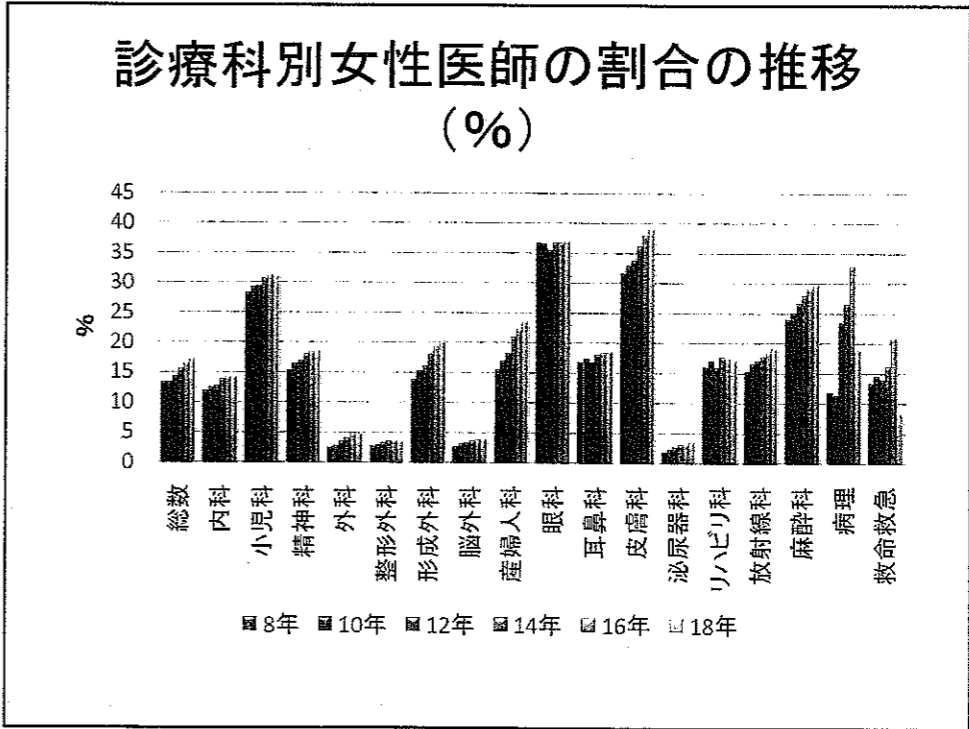
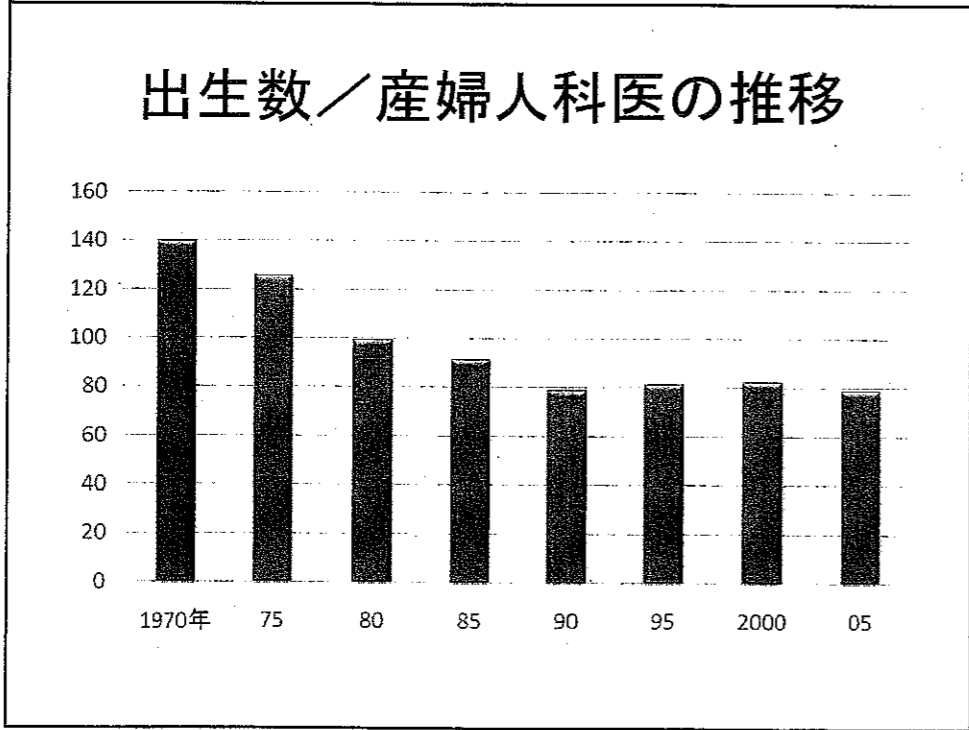
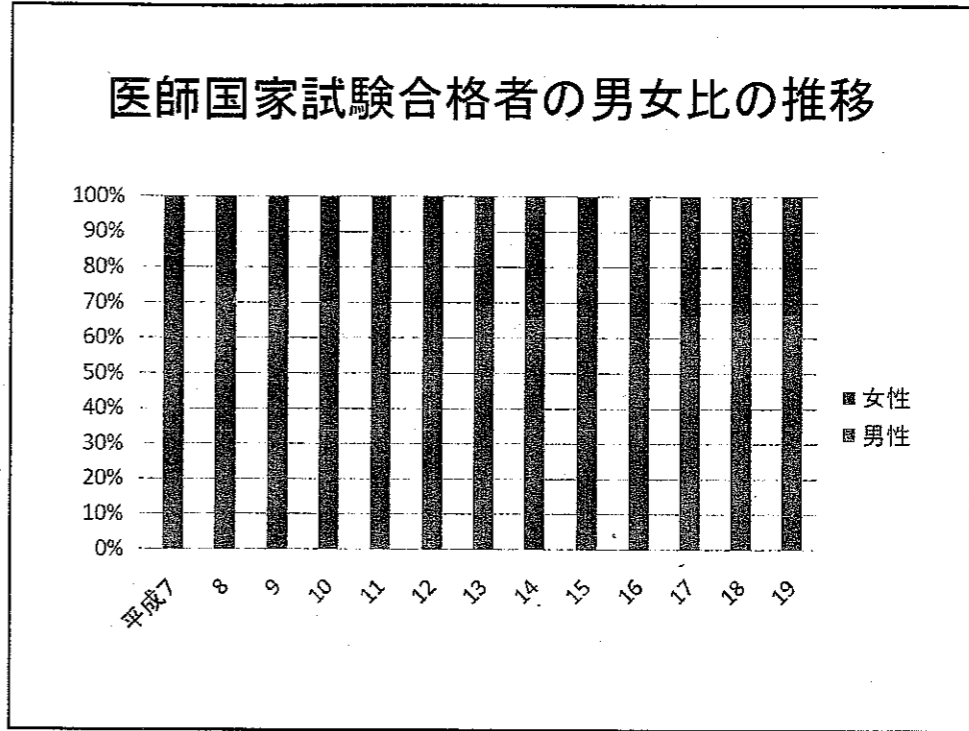
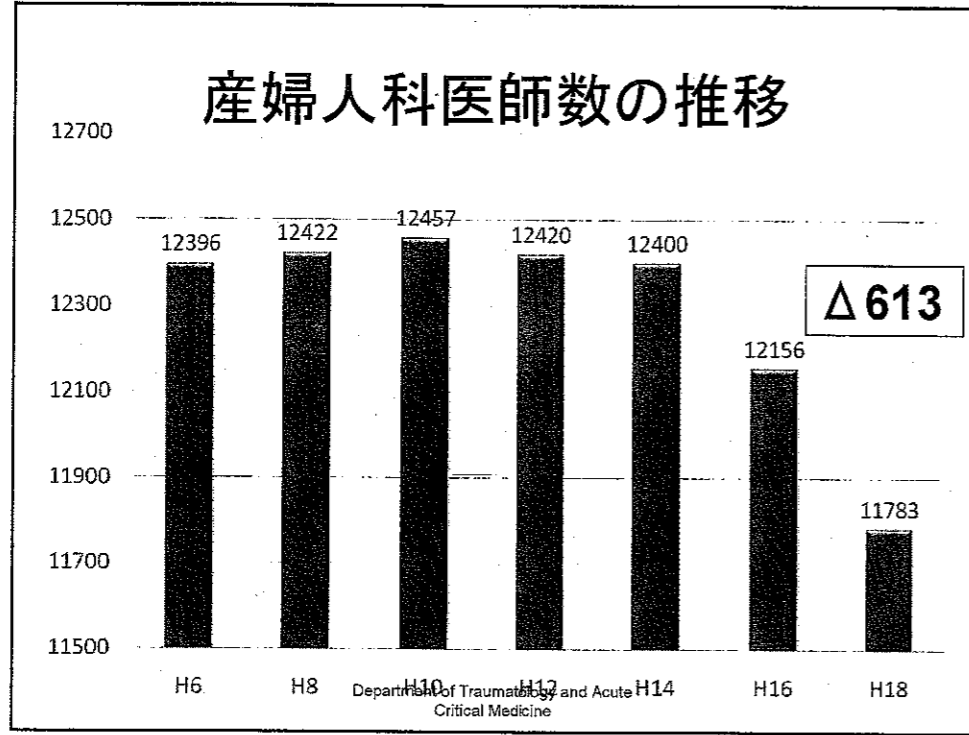
医師数の推移



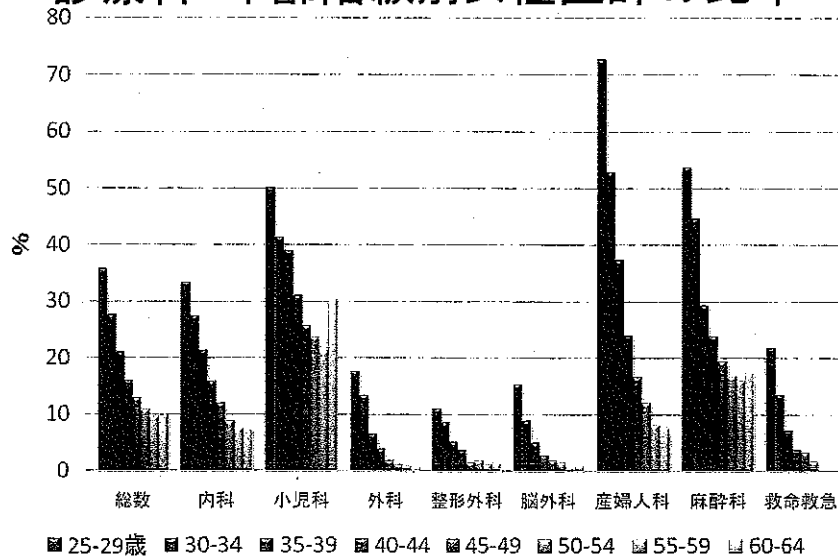
麻酔科医師数の推移





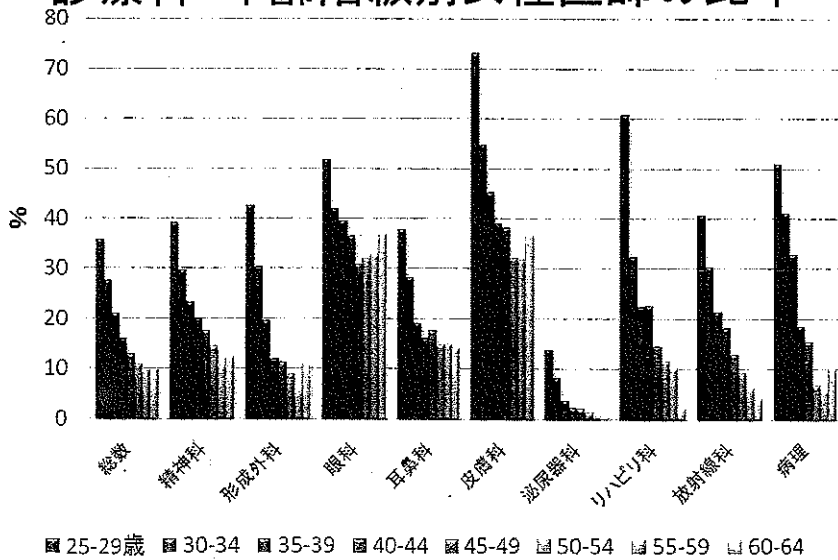


診療科・年齢階級別女性医師の比率



(平成18年医師・歯科医師・薬剤師調査)

診療科・年齢階級別女性医師の比率



(平成18年医師・歯科医師・薬剤師調査)